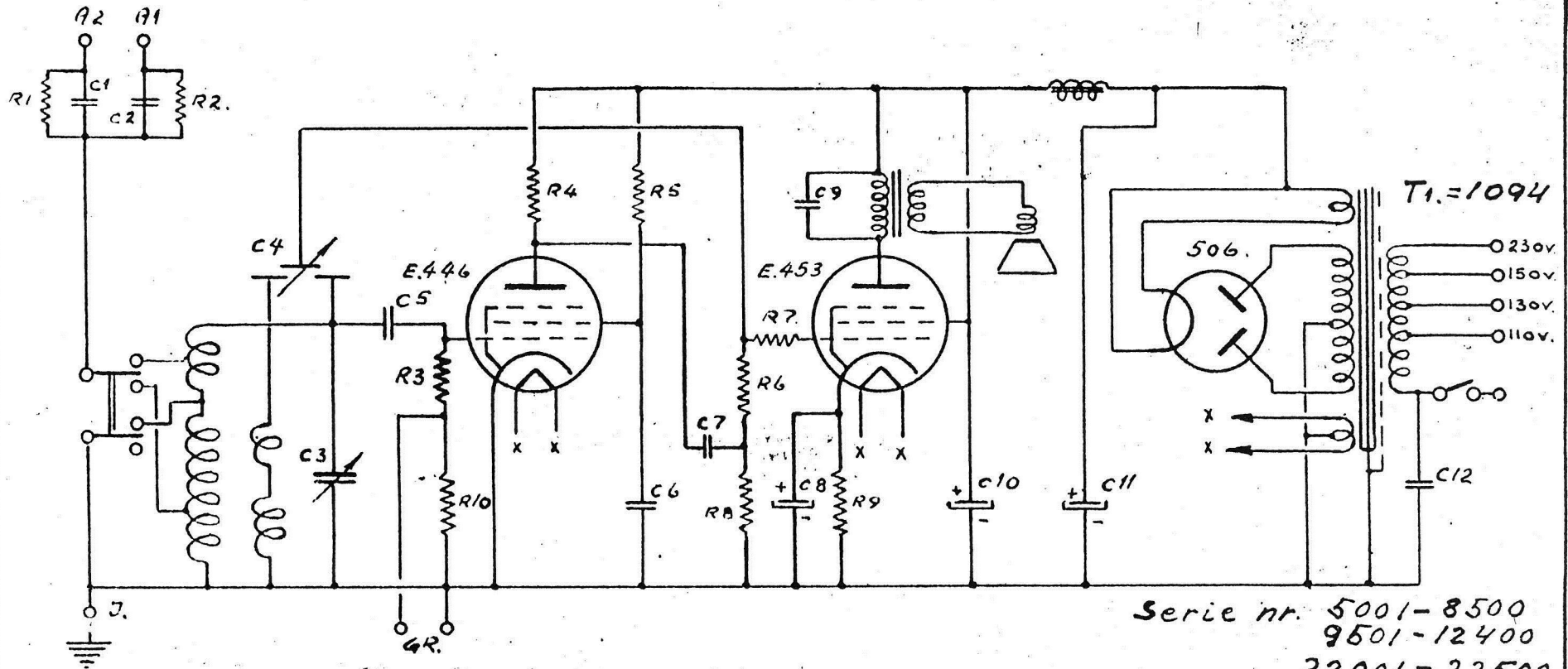


— RIKSKRINGKASTINGENS - FOLKEMOTTAGER. —



Serie nr. 5001-8500
 9501-12400
 22001-22500

- | | | | |
|-----------------------------|--------------------------|---------------|--------|
| C1 = 35 CM. GLIMMER | C10 = 8 μF 450V. ELEKTR. | R6 = 5000 Ω | 1/2 W. |
| C2 = 250 CM. — | C11 = 16 μF 450V. — | R7 = 100000 Ω | — |
| C3 = 500 CM. LUFT | C12 = 5000 CM. PAPIR. | R8 = 1 MΩ | — |
| C4 = 60-0-60 CM. | | R9 = 500 Ω | 1 W. |
| C5 = 50 CM GLIMMER | | R10 = 50 KΩ | 1/2 W. |
| C6 = 0.1 μF. PAPIR | | | |
| C7 = 10000 CM. — | | | |
| C8 = 10 μF 20V. ELEKTR. LYT | | | |
| C9 = 10000 CM. PAPIR | | | |
| R1 = 0.5 MΩ | 1/2 W. | | |
| R2 = 0.5 MΩ | — | | |
| R3 = 2 MΩ | — | | |
| R4 = 0.5 MΩ | — | | |
| R5 = 1.5 MΩ | — | | |

KOR. 11/2-37. OSLO 23-7-36